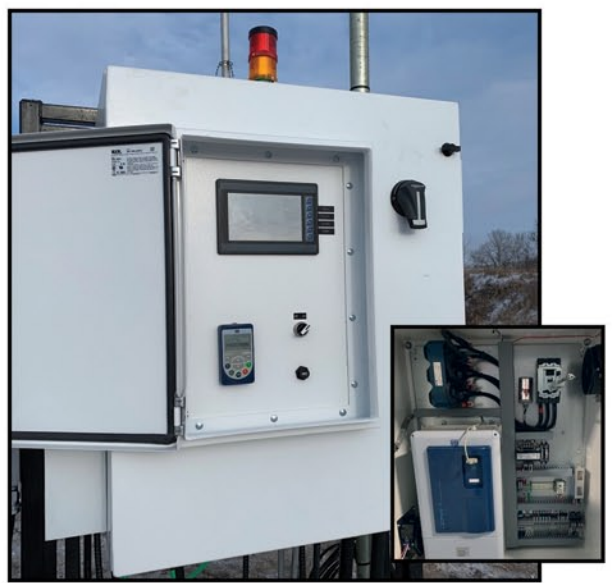




# PREMIUM AUTOMATION SOLUTION

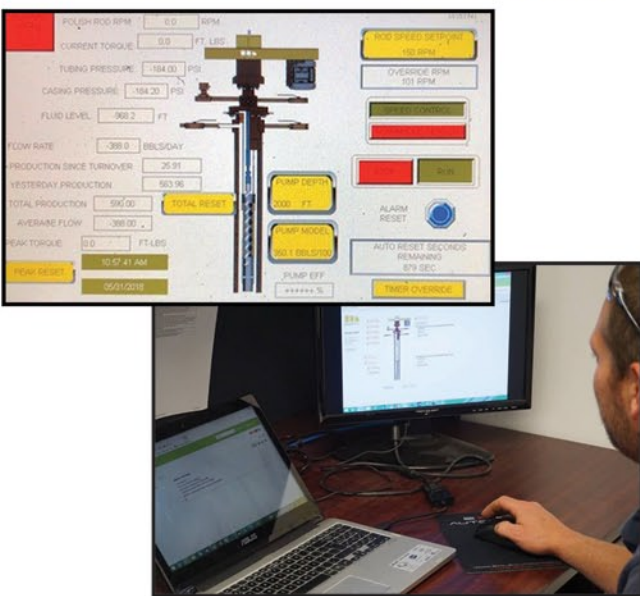
## PCP WELL CONTROLLER

- System Data Logging including alarm history and onsite trending all downloadable via USB or with our cellular communication package
- Auxiliary shutdown bypass
- Built-in backspin timer
- Programming was completed in a way to allow easy customization to fit field needs
- LED Stack light for fault and alarm notification
- No-Flow Indication and setpoints
- Aux inputs for other shutdowns (ex. high level, high pressure)
- Downhole sensor control mode
- Modbus communication via serial or IP



COMPLETELY DESIGNED IN-HOUSE BY MANTL'S TEAM USING DECADES OF EXPERIENCE IN THE FIELD

**EASY TO USE TOUCH SCREEN INTERFACE**  
FULL CONTROL FROM THE FIELD OR OFFICE



**RETRO FIT ANY EXISTING VFD WITH MANTL AUTOMATION**



MANTL can customize the programming to meet your unique field needs and tie into your existing SCADA infrastructure.

April 21, 2020

# FROM THE GROUND UP



# PREMIUM AUTOMATION SOLUTION

## MONITORING: PCP GAUGE SYSTEMS

MANTL'S gauge systems are designed and supported by experts with more than 100 years of permanent gauge design and TEC wire telemetry experience.

**PAIR A MANTL PCP WELL CONTROLLER WITH A ROBUST GAUGE SYSTEM**

### SINGLE GAUGE PROVIDES

- PUMP INTAKE PRESSURE
- PUMP INTAKE TEMPERATURE
- TRI-AXIS VIBRATION
- PEAK VIBRATION
- GAUGE DIAGNOSTIC DATA

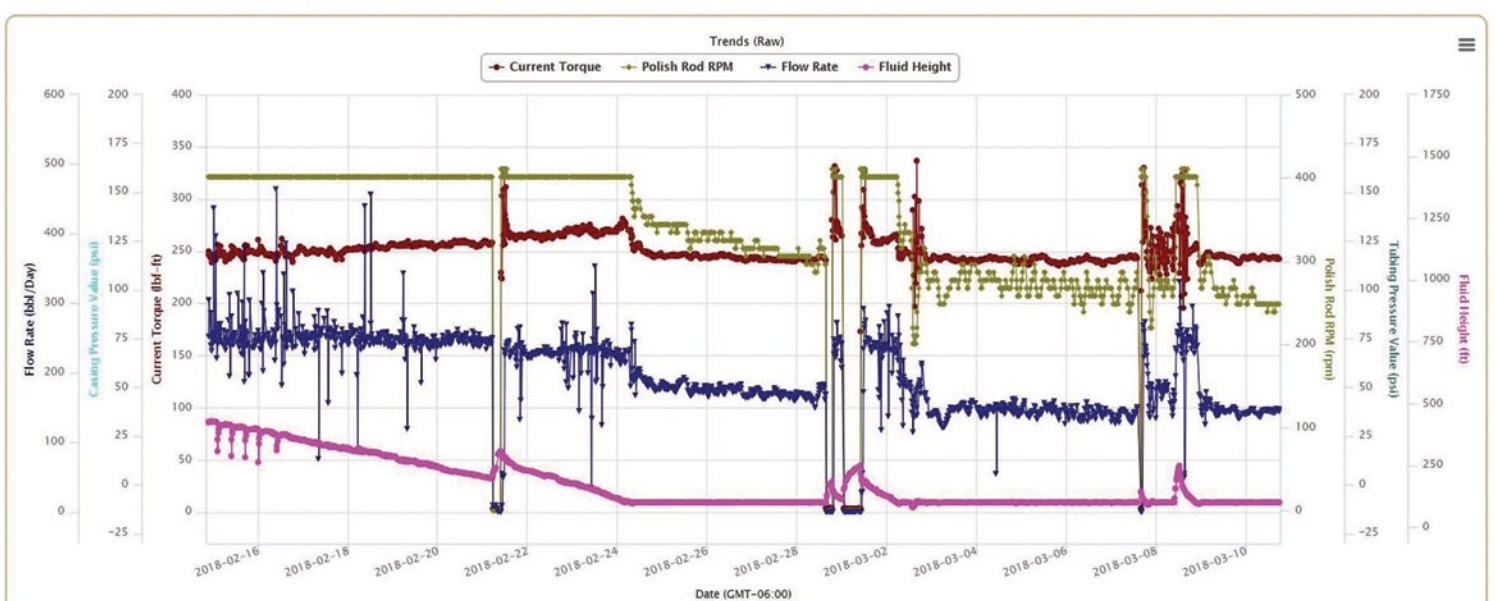
### DUAL GAUGE PROVIDES

- PUMP INTAKE PRESSURE
- PUMP INTAKE TEMPERATURE
- PUMP DISCHARGE PRESSURE
- PUMP DISCHARGE TEMPERATURE
- TRI-AXIS VIBRATION
- PEAK VIBRATION
- WELL DEVIATION (INCLINATION)
- GAUGE DIAGNOSTIC DATA



PCP Gauge with clamp-on gauge carrier & ported collar

**OPTIMIZE SYSTEM PERFORMANCE AND PROTECTION-INCREASE EFFICIENCY AND RECOVERY**



April 21, 2020

# FROM THE GROUND UP